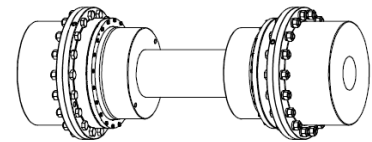
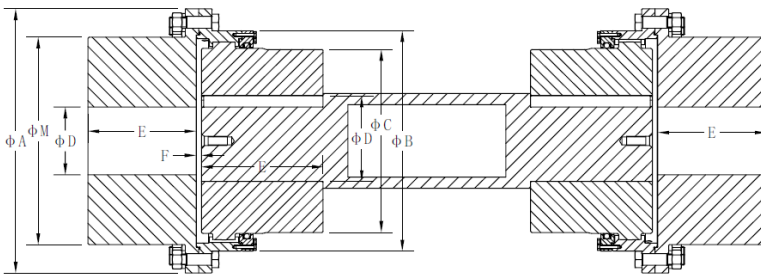


Floating shaft assemblies are used when the distance between equipment is too great for spacer couplings. A standard floating shaft assembly consists of two standard single engagement couplings, two gap discs and a connecting shaft. A floating shaft can eliminate the need for additional bearing supports along spanning shafts, because the shaft is supported by connected equipment through the single engagement couplings. The Type ZGZ Large Gear Coupling is available in all types for capacities up to 17 737 500 Nm.

## SERIES ZGZ I SIZE 100 - 1900

### Floating Shaft



Size	TN Nm (1)	TP Nm (1)	n Max rpm(2)	A	B	C	D Max (3)	E	F	M	N Max (3)	Weight Max Kg (4)	Weight /1000mm Spacer Kg	Weight Min Kg (5)	Inertia J Kgm2 (4)	Inertia /1000mm Spacer Kgm2
100	363,000	726,000	REFER TO CATALOG	540	465	370	290	250	16	410	280	1,980	55.5	1,781	33	0.624
200	412,500	825,000		585	505	410	350	270	16	460	310	2,470	67.1	2,147	51	0.914
300	528,000	1,056,000		650	548	450	380	290	16	500	345	3,072	82.1	2,671	79	1.368
400	660,000	1,320,000		690	588	490	410	325	20	540	370	3,632	93.8	3,135	109	1.78
500	841,500	1,683,000		760	640	520	450	345	20	590	390	4,258	103.6	3,621	155	2.18
600	1,089,000	2,178,000		805	690	560	480	365	20	630	420	5,021	122.1	4,266	210	3.02
700	1,287,000	2,574,000		850	730	600	520	400	20	680	460	6,056	145.0	5,096	296	4.26
800	1,650,000	3,300,000		930	780	650	560	410	25	730	500	7,161	169.9	6,031	418	5.85
900	1,980,000	3,960,000		995	850	710	600	430	25	790	550	8,646	203.8	7,297	592	8.42
1000	2,640,000	5,280,000		1,055	910	760	650	470	25	850	590	10,316	237.0	8,577	822	11.39
1100	2,970,000	5,940,000		1,140	970	810	680	500	30	890	620	11,848	260.5	9,864	1,096	13.76
1200	3,135,000	6,270,000		1,190	1,020	840	710	520	30	930	650	13,094	285.1	10,887	1,331	16.48
1300	3,465,000	6,930,000		1,250	1,080	890	770	540	30	1,010	680	15,177	319.6	12,432	1,777	20.71
1400	4,290,000	8,580,000		1,300	1,150	950	810	570	30	1,060	730	17,501	375.1	14,313	2,276	28.53
1500	6,270,000	12,540,000		1,420	1,270	1,050	900	600	30	1,170	800	21,610	435.0	17,286	3,410	38.37

1600	8,943,000	17,886,000		1,600	1,430	1,180	900	670	35	1,330	900	29,654	556.4	23,292	6,125	62.77
1700	11,962,500	23,925,000		1,740	1,570	1,320	1000	740	35	1,470	1,000	29,506	692.7	20,575	7,999	97.30
1800	14,272,500	28,545,000		1,880	1,710	1,450	1100	800	35	1,610	1,100	36,272	829.6	24,332	10,894	140.00
1900	17,737,500	35,475,000		1,990	1,830	1,580	1200	850	35	1,730	1,200	43,404	978.8	28,607	16,590	194.00

✓ The coupling is supplied by default with puller holes.

✓ Setscrews can be included upon request.

✓ Adapted hub length available upon request.

(1) The torque of the coupling does not include the connection transmission capacity.

(2) n MAX speed for balanced couplings. For higher speeds contact Feinnord.

(3) Max. allowable bore for couplings with DIN 6885/1 key. For other types of keys or connections please contact Feinnord.

(4) Weight and moment of inertia are given for minimum bore.

(5) Weight is given for maximum bore.