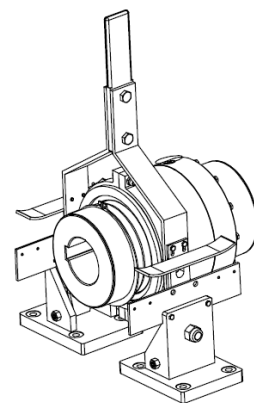
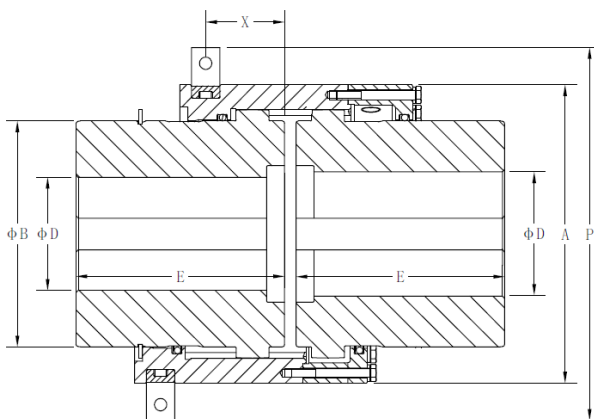


Type ZEA disengaging couplings are used for general applications that require quick disconnect of equipment or inching drives. It is used for occasional servicing or inspection of drive system components and is most commonly used on portable or stationary inching drive systems where the driving end hub/sleeve combination is mounted on the driving shaft on the incher for connecting or disconnecting at standstill.

SERIES ZEA I SIZE 5 - 62

Disengaging



Size	TN Nm (1)	TP Nm	n Max rpm(2)	A	B	D Max (3)	E	F	P	W	X	Weight Max Kg (4)	Weight Min Kg (5)	Inertia J Kgm2 (4)
5	1,150	2,300	3,000	100	60	44	55	6	104	12	24	6	5	0.008
12	2,600	5,200	2,500	120	79	60	70	6	124	14	33	10	7	0.018
18	5,000	10,000	2,000	150	101	75	80	6	154	16	40	18	13	0.051
22	8,600	17,200	1,700	177	120	95	95	8	187	16	50	30	21	0.120
28	14,000	28,000	1,500	200	143	105	105	8	210	18	56	43	30	0.210
32	20,600	41,200	1,300	226	170	130	120	8	240	20	62	63	39	0.400
38	33,000	66,000	1,150	264	200	150	135	10	280	20	70	98	64	0.830
42	45,600	91,200	1,050	290	220	165	150	10	300	22	72	126	82	1.280
48	61,400	122,800	950	325	250	190	170	10	330	24	77	178	110	2.24
52	80,800	161,600	850	353	275	210	185	12	368	26	81	229	139	3.39
58	105,500	211,000	800	377	300	230	200	12	390	26	86	283	167	4.67
62	161,000	322,000	700	435	340	260	230	12	450	30	102	415	261	9.37

✓ From size 48 (included) the coupling is supplied by default with puller holes. If required, puller holes can also be made for smaller sizes.

- ✓ Setscrews can be included upon request.
- ✓ Adapted hub length available upon request.

- (1) The torque of the coupling does not include the connection transmission capacity.
- (2) n MAX speed for balanced couplings. For higher speeds contact Feinnord.
- (3) Max. allowable bore for couplings with DIN 6885/1 key. For other types of keys or connections please contact Feinnord.
- (4) Weight and moment of inertia are given for minimum bore.
- (5) Weight is given for maximum bore.