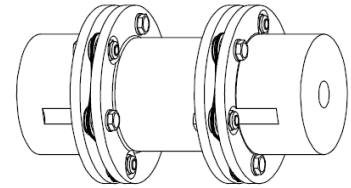
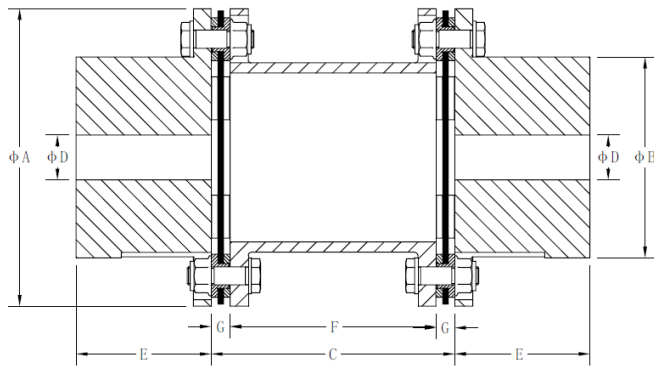


# SERIES SSD6 I SIZE 92 - 510

Standard



Size	TN Nm	TP Nm	N Max rpm unbalanced (1)	N Max rpm balanced (2)	A	B	C (3)	D Max (4)	E	F	G	Inertia J Kgm <sup>2</sup> (5)	Weight Kg (5)	Axial Misalign. ±ΔKa mm (6)	Angle Misalign ±ΔKw Degree (6)
92	240	480	9,100	22,700	90	58	71	41	40	56.0	7.5	0.002	2.1	1.5	1.5
112	575	1,150	7,200	18,000	100	70	88	50	50	71.2	8.4	0.004	2.9	2.1	
135	1,100	2,200	5,840	14,600	132	89	108	65	60	91.2	8.4	0.012	5.5	2.6	
160	2,000	4,000	4,920	12,300	158	104	124	75	70	101.6	11.2	0.025	8.6	3.1	
186	3,300	6,600	4,200	10,500	185	121	140	87	80	112.0	14.0	0.063	15	3.7	
205	4,600	9,200	3,840	9,600	202	132	158	95	90	127.0	15.5	0.11	21	3.8	1
230	7,000	14,000	3,400	8,500	228	150	174	107	100	139.0	17.5	0.20	30	4.2	
256	10,200	20,400	3,080	7,700	255	163	196	117	115	155.0	20.5	0.32	40	4.7	
280	14,200	28,400	2,800	7,000	278	183	218	131	125	175.6	21.2	0.56	57	5.2	
305	20,000	40,000	2,560	6,400	302	201	234	145	135	185.2	24.4	0.86	74	5.7	
326	25,000	50,000	2,400	6,000	325	219	254	156	145	202.0	26.0	1.17	89	6.5	
346	31,000	62,000	2,200	5,500	345	230	270	165	155	213.6	28.2	1.63	109	6.9	
382	42,300	84,600	2,040	5,100	380	249	296	178	170	232.0	32.0	2.64	146	7.6	
412	57,100	114,200	1,880	4,700	410	269	320	192	185	253.6	33.2	4.04	190	8.2	
445	73,500	147,000	1,740	4,350	440	289	334	206	195	261.2	36.4	5.45	224	8.8	
480	92,000	184,000	1,680	4,200	475	309	358	220	210	281.6	38.2	8.20	288	9.5	

---

510	117,000	234,000	1,520	3,800	505	327	394	233	230	310.0	42.0	11.96	366	10.1	
-----	---------	---------	-------	-------	-----	-----	-----	-----	-----	-------	------	-------	-----	------	--

**Larger sizes are available on demand.**

- 1) Operating speed must be equal or less than permissible speed. Permissible speeds could be limited by the weight and critical speeds of spacers. Check the dynamic balancing guide and critical speeds in catalog
- 2) Max. rotation speeds considered in special mat. and/or execution. For higher rotation speeds, please consult Feinnord.
- 3) Dimension DBSE is the distance between shafts ends and is a variable parameter.
- 4) The maximum bores shown are for cylindrical or taper shafts with keys. For other type of connections consult Feinnord.
- 5) Value of complete coupling with DBSE min, D max., GD2 =4J.
- 6) The value for axial misalignment is given for a complete 2 disc pack. Angular misalignment is given per pack. Refer to catalog for combined permissible misalignment.
- 7) Overload bushings (SSD6xxxR) are available on demand.